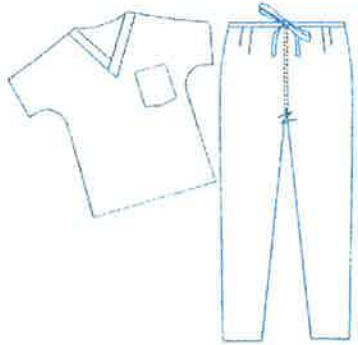


# Department of Emergency Medicine

## Scrub/Lab Coat Specifications

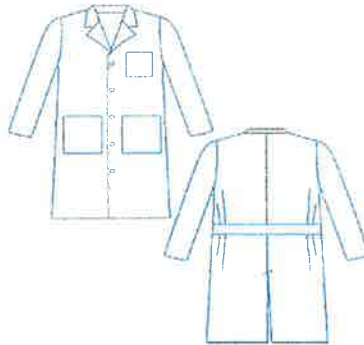
The Department of Emergency Medicine orders all embroidered/branded products from the WVUH Giftshop, in compliance with WVU Trademark Licensing policy.

Unisex Reversible Scrub Sets



AVAILABLE SIZES:  
XS-2XL

Men's 3-Pocket, Full Length, Twill Lab Coat



AVAILABLE SIZES:  
32-52

Women's 3-Pocket, Full Length, Poplin Lab



AVAILABLE SIZES:  
4-20

### Scrub/Lab Coat Order

EMPLOYEE USE					
NAME (as it is to appear)			TITLE (as it is to appear)		
EMAIL			PHONE		
TOP SIZE		PANT SIZE		LAB COAT SIZE	
OFFICE USE ONLY					
QUANTITIES					
LOCATION	TOP	PANTS	LAB COAT		
<i>West Virginia University Hospitals</i>					
<i>WVU Urgent Care</i>					
<i>United Hospital Center</i>					
<i>St. Joseph's Hospital</i>					
<i>Student Health Services</i>					
DATE SUBMITTED		DATE ORDERED		DATE RECEIVED	
DATE SUBMITTED TO GIFTSHOP				DATE RETURNED BY GIFTSHOP	

Please remit completed forms to Kim Menear:  
 kmenear@hsc.wvu.edu or  
 PO Box 9149, Morgantown, WV 26506