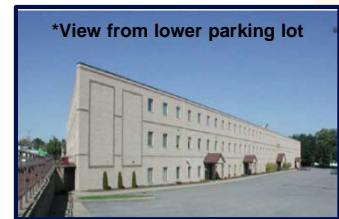


## Directions to the WVU Medicine Operations Support Center

3040 University Avenue Morgantown, WV 26505



### From Ruby Memorial Hospital

- From WVUH Visitor's Parking Lot, make a right turn.
- Go to the stop light.
- Turn left onto Patteson Drive.
- Immediately, get in the right lane.
- At the next stoplight, make a right onto University Avenue.
- Travel 0.2 miles and turn right into the lower parking lot for the WVU Medicine Operations Support Center (across Tudor's Biscuit World).

**\*If you have reached Kroger Gas Station, you have gone too far.**

### From I-79 North (Washington, PA)/I-79 South (Fairmont, WV)

- Take EXIT 155.
- Bear to the right at the light at Sheetz onto Route 7 East.
- After traveling approximately 1 mile, turn left at the 2<sup>nd</sup> traffic light onto Patteson Drive. (Rt. 705 East)
- At the 2<sup>nd</sup> traffic light, move into the center lane and turn left onto University Ave.
- Travel 0.2 miles and turn right into the upper parking lot for the WVU Medicine Operations Support Center (across from Tudor's Biscuit World – not by WVU Medicine Sign).

**\*If you have reached Kroger Gas Station, you have gone too far.**

### From I-68 East (Uniontown, PA/Cumberland, MD)

- Take EXIT 7 toward WV-705/Airport/Pierpont Road, veer to the right.
- Get in the left lane to pass through the 1<sup>st</sup> traffic light.
- At the 2<sup>nd</sup> traffic light, which is at the bottom of the hill, turn left onto 119 South.
- Follow 119 South, staying in the right lane and continue through the traffic light at the top of the hill (the airport will be on your left).
- Approaching the traffic circle, continue onto WV-705 West.
- Travel approximately 2 miles on WV-705 West and at the 7<sup>th</sup> traffic light, turn left onto Van Voorhis Rd.
- Travel another 0.5 miles on Van Voorhis Rd and at the 3<sup>rd</sup> traffic light, turn right onto University Ave.
- Travel 0.2 miles and turn right into the upper parking lot for the WVU Medicine Operations Support Center Office (across Tudor's Biscuit World – not by WVU Medicine Sign).

**\*If you have reached Kroger Gas Station, you have gone too far.**

## **WVU Medicine Operations Support Center Directions:**

If you are driving, please park in the upper or lower parking lot. If you are taking the hospital shuttle, you will need to park in the gravel shuttle parking.

### From upper parking lot:

- Please enter the main doors located in the middle of the building.
- Once inside, take the left hallway toward CEOD and Merlin Training Rooms.
- Continue straight.

Merlin/EPIC Rooms 2 & 4: Take the first hallway on the left.

Merlin/EPIC Rooms 1 & 3: At the end of the hallway, turn left. Rooms are located on the left before the exit.

CEOD Training Rooms: At the end of the hallway, turn left. Rooms are located on the right. Follow signs for appropriate training room.

### From lower parking lot :

- Please enter the main doors located in the middle of the building.
- Once inside, take the stairs or elevator to the 2<sup>nd</sup> level.
- Take the right hallway towards CEOD and Merlin Training Rooms.
- Continue straight.

Merlin/EPIC Rooms 2 & 4: Take the first hallway on the left.

Merlin/EPIC Rooms 1 & 3: At the end of the hallway, turn left. Rooms are located on the left before the exit.

CEOD Training Rooms: At the end of the hallway, turn left. Rooms are located on the right. Follow signs for appropriate training room.

